

Residential Land for Sale

Overlooking Lake Coeur d'Alene

City of Harrison, Idaho



2 Parcels of Raw
Land Totaling **36.14**
Acres

For Sale Information

Contact
(347) 337-5462



All information is from the client and/or other sources
deemed reliable and has not been independently verified.
No representation, warranty or guarantee, expressed or
implied or by operation of law, is made as to the accuracy,
reliability, or completeness of this information.

(347) 337-5462

Property Overview

Three parcels of raw land overlooking Lake Coeur d'Alene within the city limits of Harrison Idaho. (The acreage totals below are from the Kootenai County Assessor's records).

1. Property A is on the North East corner of Harrison and is comprised of:
Government Lot 3 (**20.79** acres) – Parcel #Y00000062500

2. Property B is in east central Harrison and is comprised of:
Lots 5, 6, 7 of Crane's Park Addition (**1.3** acres) – Y1900004005A
Government Lot 4 (14.05 acres) - Parcel #Y00000011925

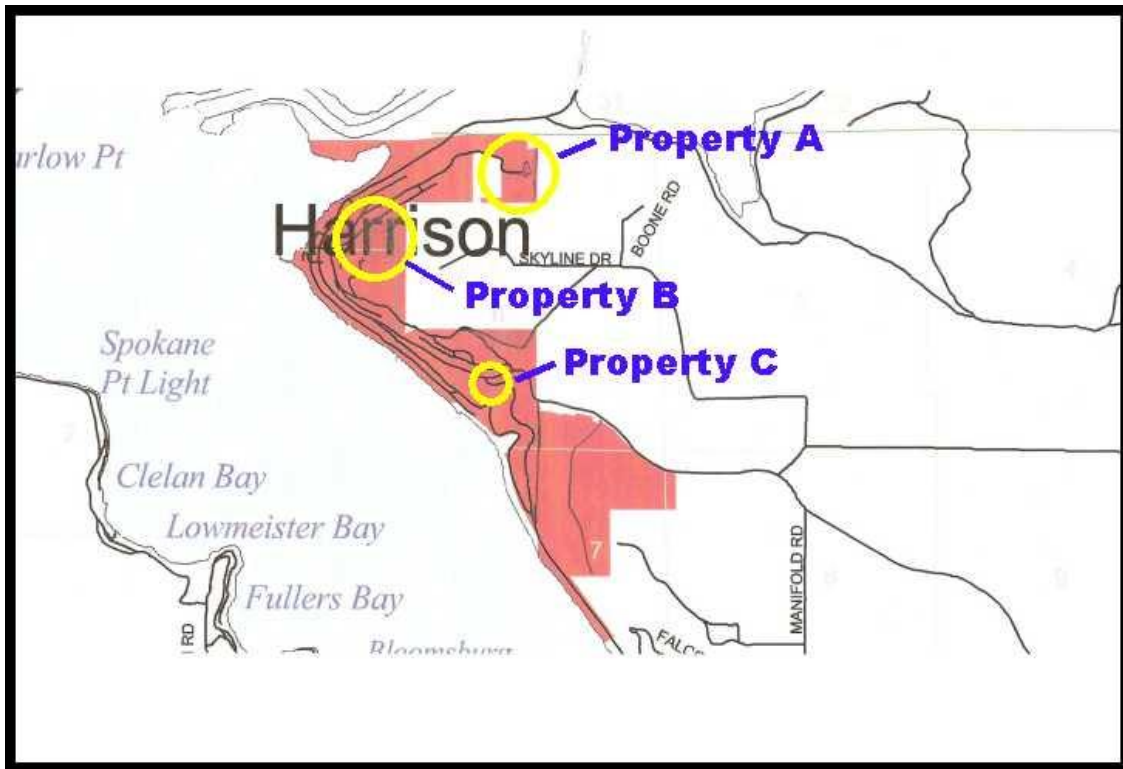
3. Property C **SOLD**



All information is from the client and/or other sources
deemed reliable and has not been independently verified.
No representation, warranty or guarantee, expressed or
implied or by operation of law, is made as to the accuracy,
reliability, or completeness of this information.

(347) 337-5462

Relationship of Parcels to the city limits of Harrison

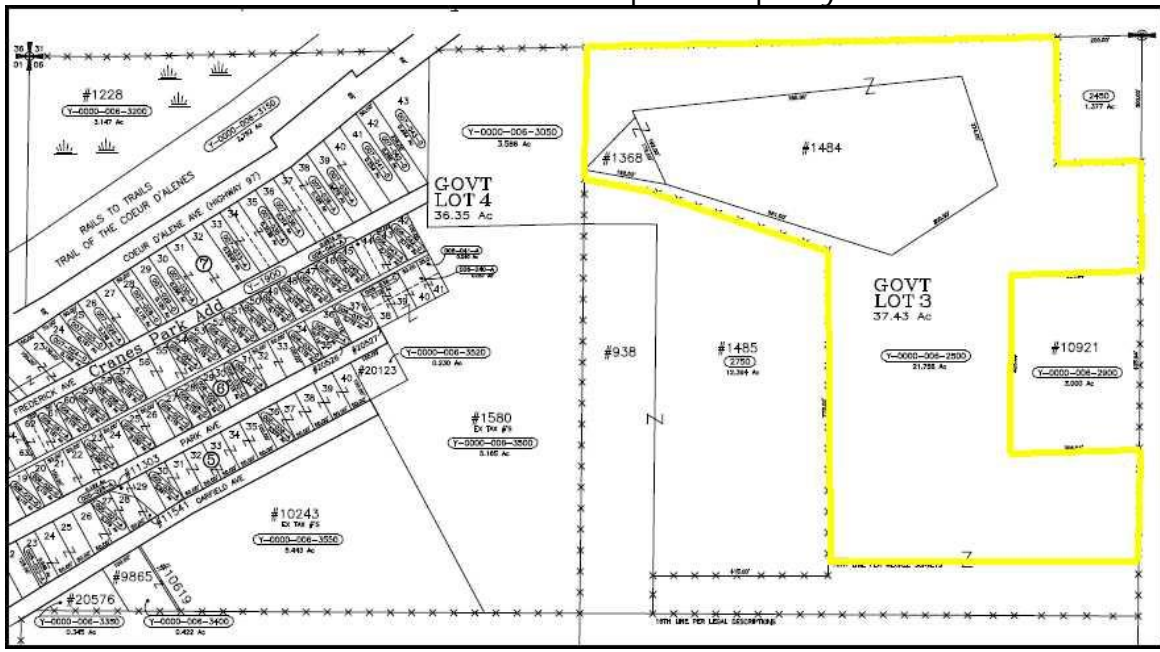


Aerial View of Harrison With Parcel Locations Approximated



Property A

Assessor's Parcel Map of Property A

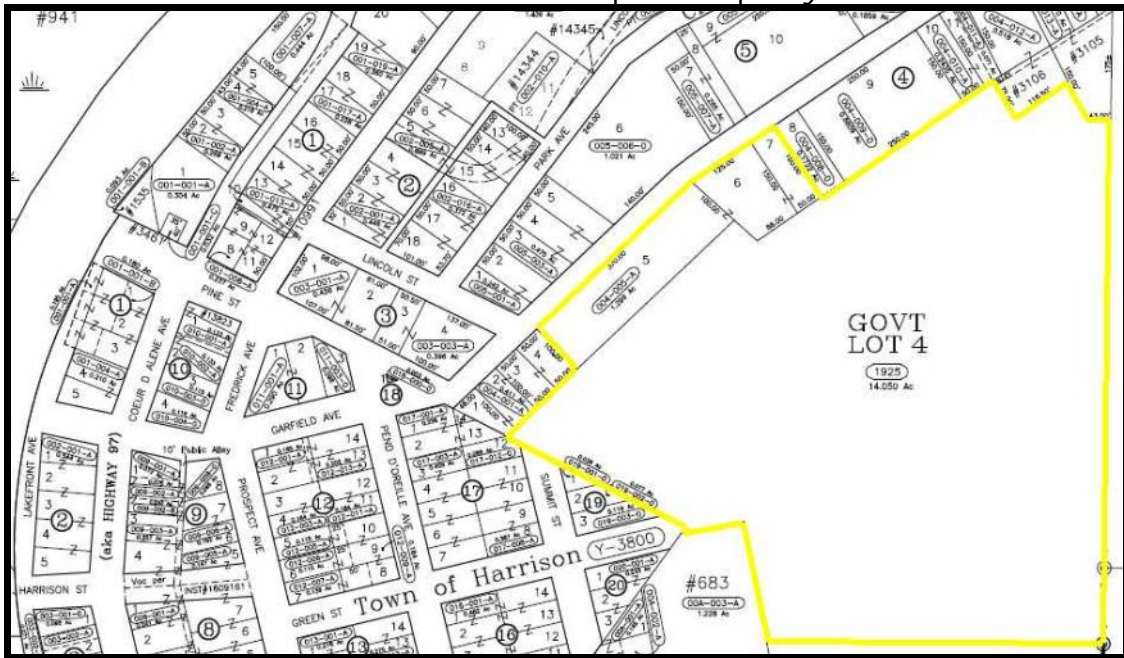


The photo below illustrates the outline and topography of Property A



Property B

Assessor's Parcel Map of Property B



The photo below illustrates the outline and topography of Property B Including Lots 5,6,7 of Crane's Park Addition and Government Lot 4

